



**MAMMIA**  
ENTERPRISES

**Add:- Plot No.- W-50A, Behind Graphite India Ltd.,  
MIDC, Satpur, Nashik-422007**

**Mamta Enterprises, The Leading Manufacturers Of Metal Fasteners, Press Parts & Machining Components. There Is The Robust System Of Manufacturing Of Rivets, Nuts & Bolts, Washer (M.S. & S.S), Machining Components Like Bushes Special Types Of Studs And It Is Get Manufactured With Precise Quality. The Company Is Certified With ISO9001:2015 & IATF 16949: 2016 The Company Has Most Suitable Environment To Work & The All Industrial Safety Equipments & The Strict Instructions Of The Use Of Safety Is Provided By The Us Through Training.**

- INTRODUCTION
- ORGANIZATIONAL CHART
- PURPOSE
- GOAL
- APPEARANCE
- MANUFACTURING FACILITY'S
- MANUFACTURING PARTS/PRODUCTS
- OPPORTUNITYS
- SCOPE
- STANDARDS
- VALUES
- CERTIFICATIONS
- QUALITY CONTROL
- TARGET
- VALUABLE CUSTOMERS



We are pleased to introduce ourselves as a leading manufacturer of fasteners, Washers and Stamping Parts with brand name ME established in the year 2014 at Satpur MIDC, Nasik (Maharashtra) India. We are glad to present ourselves as an ISO 9001:2015 & IATF 16949:2016 Certified Company in order to ensure better product quality.

The main motto of our company is to provide quality fasteners with customer satisfaction & timely delivery to valued customers. We have acquired a workshop at Nasik in the land area of 10,000 sq. feet, where we have a ready stock of all types of fasteners.

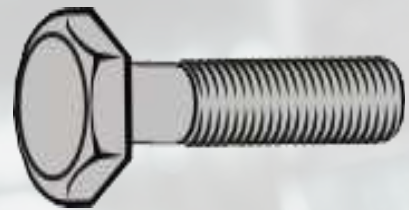
We have our specialization in Hex Bolts, Studs, Washer, All Type Of Nuts, Screws, Anchor Fasteners, Rivets & Self tapping Screws. In various types of grades like 8.8, 10.9, 12.9 and SS304/316 as per customer requirements.





# Our Offerings

---



**Hex bolts**

Hex bolts are partially threaded and are used in machinery and construction applications. Can be used with a nut or in a tapped hole and are tightened with a wrench.



**Self-drilling**

**Self-tapping and Thread-forming screws**

These are screws which form a thread as they are inserted. The choice of screw used will depend upon the material, its thickness and the application. A pilot hole may be required.



**Hex set screws**

Hex set screws are similar to the Hex bolt but are fully threaded instead of partially threaded. They are also used in machinery and construction applications and can be used with a nut or in a tapped hole.



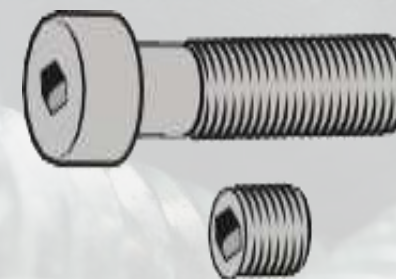
**Machine screws**

Machine screws are fully threaded and are used with a nut or in a tapped hole. They can be used in many applications where a high strength fastener is not required. The drive type dictates the appropriate screwdriver required.



**Wood screws**

Wood screws are primarily used in carpentry applications. They provide a strong clamping force which strengthens the joint between two materials. Wood screws are suitable for fixing hinges, bolts, locks and other door hardware.



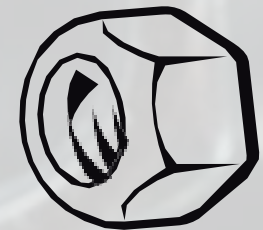
**Socket screws**

Socket screws have an internal hex drive and are tightened using a hex key. Often they are used in applications where there is limited clearance. A headless version is available and is known as a socket set screw or grub screw.



### Coach/Carriage Bolts

Coach bolts, also known as Carriage bolts, have a domed head with a square section underneath that pulls into the material or a square hole to prevent spinning during installation.



### Nuts

Nuts are used with machine threaded fasteners in through-hole applications. Hex nuts are the most common type and are for general-purpose fastening applications. Other types are chosen depending on the application required. These include locking nuts, which are used when a greater resistance to vibrations and torque is required.

Connecting or coupling nuts are used to provide spacing between component parts of an assembly.



### Washers

Washers are generally used with a machine threaded fastener and nut to spread the load over a greater surface area when tightening a bolt, screw or nut.



### Pan Phillips Screw

Commonly used for joining two flat surfaces together. Typical applications include cable tray fixing as well as fencing and roofing, roofing bolts generally have a single/cross-slot mushroom head and are supplied with a square or hex nut.



### Coach Screws

Also known as lag screws or lag bolts, coach screws are heavy duty fasteners for fastening metal pieces with timber and also to fasten heavy timbers. With a square or hexagonal head, they have an externally threaded cylindrical shaft that tapers to a point.

## Zinc plated steel

Zinc plating provides moderate corrosion resistance suitable for indoor use in a dry environment.



## Stainless steel

Stainless steel offers good corrosion resistance, making it suitable for outdoor applications, but is more expensive than zinc plated or galvanised steel.

The two most common grades of stainless steel are A2 (304) and A4 (316). Both grades will offer a good form of corrosion resistance and both are able to handle low (cryogenic) and high temperatures. A4 grade has a higher corrosion resistance than A2 grade and should be chosen in higher corrosive and chemical environments, including contact with dilute sulphuric acid and acetic acid. A4 should be chosen for marine conditions.



## Brass

Brass is a copper alloy which is more expensive than steel but provides a better level of corrosion resistance. It is used when a decorative finish is required and also in marine applications. It can be Nickel Plated or Self Colour.



## Chrome and nickel plated steel

Chrome and nickel plated steel have a smooth, polished appearance and are used where a decorative finish is desired. The nickel plating gives moderate corrosion resistance.



## Alloy steel

Alloy steel is used when a high strength fastener is required. Usually produced with a black self colour finish which offers little corrosion resistance and so is not recommended for outdoor use.



## Nylon

Nylon fasteners offer good value and are ideal where a corrosion-free, lightweight solution is required. They offer good insulation resistance and can be used in high voltage assemblies.

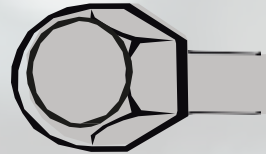


## Titanium

Titanium fasteners are non-toxic and offer lightness and very high corrosion resistance that makes them ideal for where these attributes are vital. Comparatively more expensive than other types.





**Hex**

Used for larger bolts and set screws. Fastened with a spanner or socket.

**Round**

Often chosen for decorative purposes, round heads are domed and have either Cross Recess or slotted drive.

**Pan**

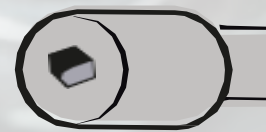
Consists of a raised, domed head which sits above the material surface.

**Countersunk (flat)**

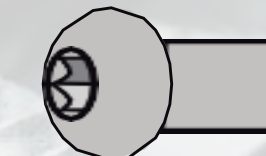
Fastened into a countersunk hole with head sitting flush with the material surface.

**Countersunk (raised)**

Fastened into a countersunk hole and with an oval, raised head for decorative purposes.

**Socket**

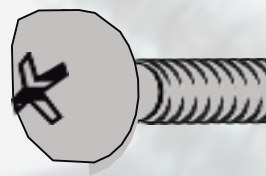
Narrow head with an internal hex socket drive. A headless version is available and is known as a socket set screw or grub screw.

**Button**

Consists of a low profile, rounded, dome-shaped head, typically with a hex socket drive.

**Cheese**

A cylindrical shaped head with straight sides that sits above the material surface.

**Mushroom**

Larger diameter and lower profile than round head, mushroom is slightly domed with an extra large surface area. Most commonly seen with slot or cross slot.



**Slotted**

Highly versatile, most commonly used in woodworking applications.



**Cross Recess**

An improved version of the traditional Phillips drive. Cross Recess are less likely to cam out and allow for greater torque pressure.



**Hex socket**

Used with a Hex key in Applications where there is limited space.



**Pozisquare/Phillips**

Offering improved contact over standard slotted drives, Pozisquare allows for greater torque to be applied over slotted drive. gives a 'stick-fit' between driver and screw.



**Torx**

Very common in automotive applications and highly resistant to slippage or cam-out.



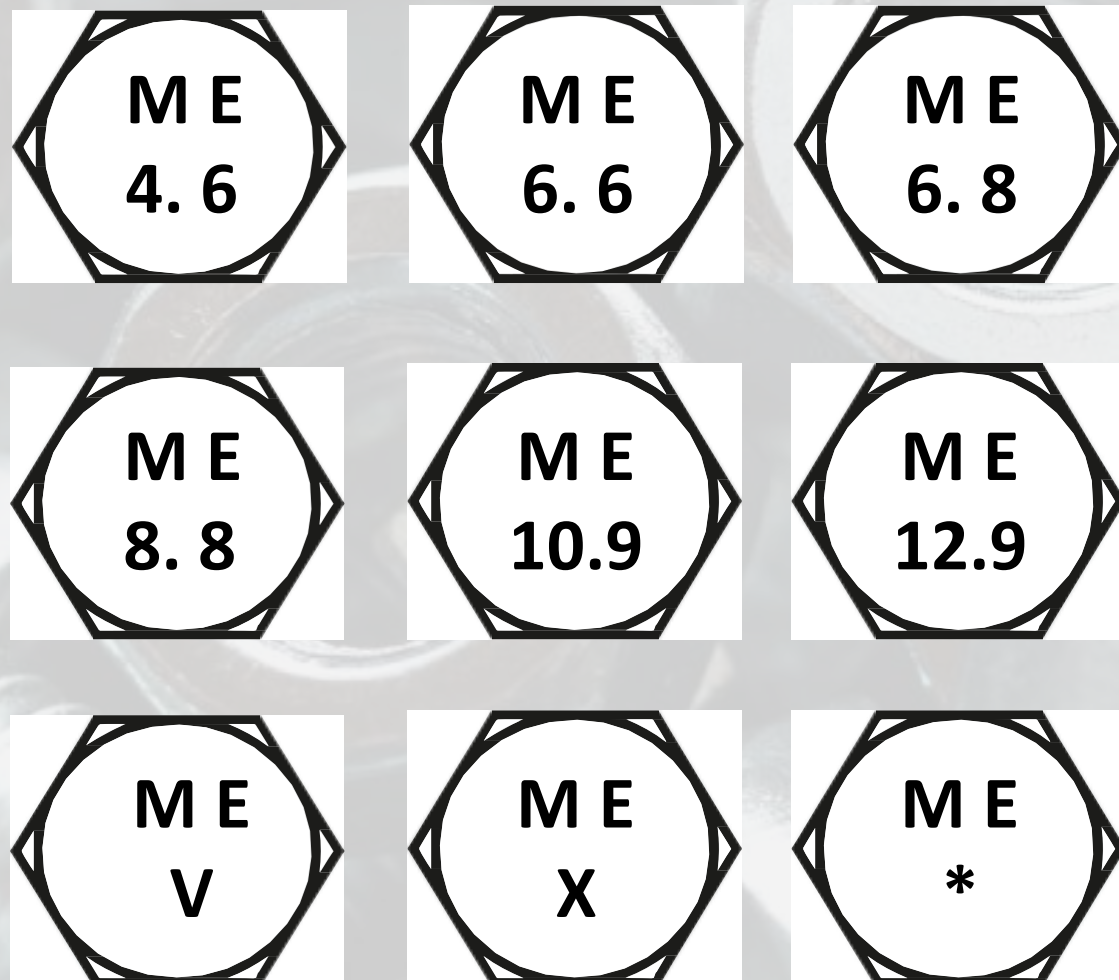
**Security**

A range of tamperproof types with a spigoted recess virtually eliminating unauthorised Removal.

The fastener grade indicates the mechanical properties of the material and is stamped onto the head of a bolt or screw.

A higher number indicates a stronger, more hardened material. So grade 12.9 will be stronger than 10.9.

A manufacturer's stamp may also be marked.



**MAMTA ENTERPRISES  
HARDNESS CHART**

SR.NO	GRADE	HARDNESS
1	4	SOFT
2	4.6	SOFT
3	6.6	SOFT
4	6.8	SOFT
5	7	20-28 HRC
6	7T	20-28 HRC
7	9T	28-34 HRC
8	8.8	22-32 HRC
9	9.8	28-34 HRC
10	10.9	33-39 HRC
11	12.9	39-44 HRC
12	v	33-39 HRC
13	X	38-44 HRC
14	*	33-39 HRC



**Hex Nut**

**Sizes :- M3 To M36**

**STD.:- DIN 934**



**FLANGE NUT**

**Sizes :- M6 To M16**

**STD.:- DIN 6923**



**Nylock Nut**

**Sizes :- M6 To M16**

**STD.:- DIN 982**



**Projection Weld Nut**

**Sizes :- M6 To M16**

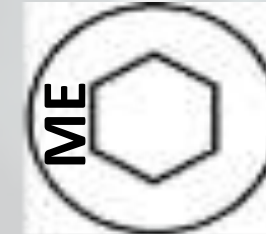
**STD.:- DIN 929**

## TYPES OF BOLTS

## SIZE & RANGE



**ALLEN SCREW**  
**SIZE:-M4 TO M12**  
**AVAILABLE LENGTH**  
**M4X10TO M12X100**



**ALLEN BOLT**  
**SIZE:-M4 TO M12**  
**AVAILABLE LENGTH**  
**M4X10TO M12X100**



**HEX SCREWS**  
**SIZE :- M4 TO M20**  
**AVAILABLE LENGTH**  
**-M4X10TO M20X100**



**HEX BOLT**  
**SIZE :-M4 TO M20**  
**AVAILABLE LENGTH**  
**M4X10TO M20X200**



**GRUB SCREW**  
**SIZE:-M4 TO M12**  
**AVAILABLE LENGTH**  
**-M2X10TO M12X50**



SELF TAPPING SCREWS (CSK)

# TYPES OF SCREWS

# SELF DRILLING SCREWS & COACH SCREWS



SELF DRILLING SCREWS

COACH(WOOD) SCREWS



**WASHERS**



**OTHER PRESS COMPONENTS**





**FULL THREADED RODS**



**HALF THREADED RODS**



**EXTENDED BOLT**



**THREADED BUSH**



**SPECIAL PURPOSE BOLTS**

- Fastener thread standards are commonly judged by ISO standards, as laid out in ISO 68-1, ISO 261, ISO 262, and ISO 965-1.
- There is a huge range of screws and bolts and depending of their uses and shapes we found several classifications. They are as follows :
  - **Wood screw**
    - Covered by the standard DIN 97 and under various heads (flat, oval, countersunk, Phillips head, Allen type head, Torque head).
  - **Lag screws**
    - These are used to fix brackets with a high weight. Covered by standard DIN 571.

- **Self- tapping**
  - On thread-forming screws feature threads that are designed to tap their own holes. This type is not suitable for harder materials. DIN 7970, ISO 1478, BS 4174.
- **Machine Screw**
  - Machine screws have fine threads than wood screws. They are designed to be used in conjunction with a nut or tapped hole. DIN 7985, ISO 7045, DIN 965, DIN 966, DIN 84, DIN 85, DIN 933, DIN 931, DIN 912, DIN 934 etc.
- **Sheet Metal Screws**
  - These screws usually are short and have coarse threads that are designed to grab onto relatively thin sheet metal. DIN 7981, ISO 7049, DIN 7976, DIN 7983, DIN 7971, DIN 7504, etc.
- Screws also can have various finishes such as zinc plating, black oxide or non-stick coating, HDG (hot dip galvanized), DICROMET COATING.

# HEAT TREATMENT SHOP :-



**MESH BELT FURNACE**  
( FOR OIL QUENCHING)



**HEAT TREATMENT FURNACE**



**SEALED QUENCH FURNACE**



**METALLURGY LAB**



**ROCKWELL HARDNESS TESTER**



**BRINELL HARDNESS TESTER**



**ZINC PLATING BARREL**



**PASSIVATION TANK**



**BOLT FORMER (NATIONAL M12)**

○ **Bolt Former Machine - 01 Nos.**

➤ Bolt Former M/C Is A One Type Of Cold Forging Machine With A Three/ Four Stroke It Works, By Converting Job One Station To Another Station It Makes Bolt/ Special Types Of Rivets

➤ **Capacity – 70 lac Nos./ Month**

○ **Machine Specification -**

➤ M12 x 150 mm



○ **Header Machines - 10 Nos.**

➤ Cold Forging Machines For Forging Of Rivets, Screws & Bolts.

○ **Capacity - 150 Ton / Month**

○ **Machine Specification -**

➤ M4 x 50 mm

➤ M5 x 70mm

➤ M6 X 120mm

➤ M8 X 120mm

➤ M10 X 120mm

➤ M12 X 100mm

**HEADER MACHINE**



○ **Trimming Machines - 04 Nos.**

➤ Secondary Machine To Trim Hex Head Of Hex Bolts, It Is Also Used To Trim Different Types Of Head Shapes.

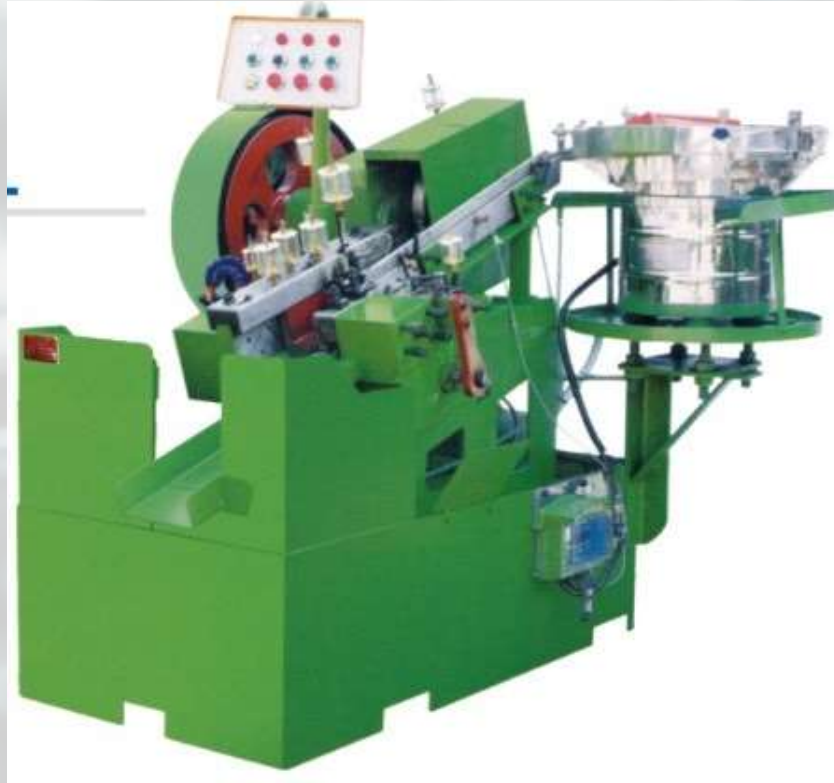
○ **Capacity - 150 Ton / Month**

○ **Machine Specification -**

- M6 X 70mm
- M8 X 80mm
- M10 X 200mm
- M12 X 130mm

**TRIMMING MACHINE**





➤ **THREAD ROLLING MACHINE**

○ **Thread Rolling Machines - 05 Nos.**

➤ Thread Rolling Machine Is Used To Provide/Making Threads Of Bolts.

○ **Capacity - 150 Ton / Month**

○ **Machine Specification -**

➤ M6 X 70mm

➤ M8 X 80mm

➤ M10 X 200mm

➤ M12 X 130mm

○ **Hydraulic Thread Rolling Machine - 01 Nos.**

➤ It Is To Provide Fully Threaded Rods.

○ **Machine Specification -**

➤ M19 X 1500mm



➤ **HYDRAULLIC THREAD ROLLING MACHINE**



○ **Slotting Machines - 02 Nos.**

➤ Secondary Machine To Provide Slot To A Screws Or Bolts

○ **Capacity - 105 Ton Nos./ Month**

**SLOTING MACHINE**



**Traub Machine**

- **Traub Machines (A-32) - 05 Nos.**

- A Traub Machine is a type of lathe that incorporates automatic control systems to carry out various machining operations. It is designed to perform turning, drilling, threading, and other cutting processes with high precision and speed.

- **Capacity – Various Depends On Job Operations.**

- **Machine Specification -**

- $\varnothing 32$  x 150 mm

- **Traub Machines (A-42) - 01 Nos.**

- **Machine Specification -**

- $\varnothing 42$  x 200 mm



POWER PRESS MACHINE

○ **Power Press Machines - 10 Nos.**

➤ Press Machine, Is A Machine Which Is Used To Make/ Convert Sheet Metal In To A Specific Part Like Washer's, Bowls, Bending Parts.

○ **Capacity – 63,000 Nos./ Month**

○ **Machine Specification –**

➤ 30 Ton

➤ 50 Ton

➤ 70 Ton

## TOOL ROOM MACHINES



**MILLING MACHINE**

➤ Milling Machine, It Is Used To Make A Different Types Of Parts/ Shapes With The Help Of Rotary Cutter.



**SURFACE GRINDING MACHINE**

➤ Surface Grinding It Is Used To Provide Flat Surfaces With Exact Size Within Tolerance Of 20 Microns



**CYLINDRICAL GRINDING MACHINE**

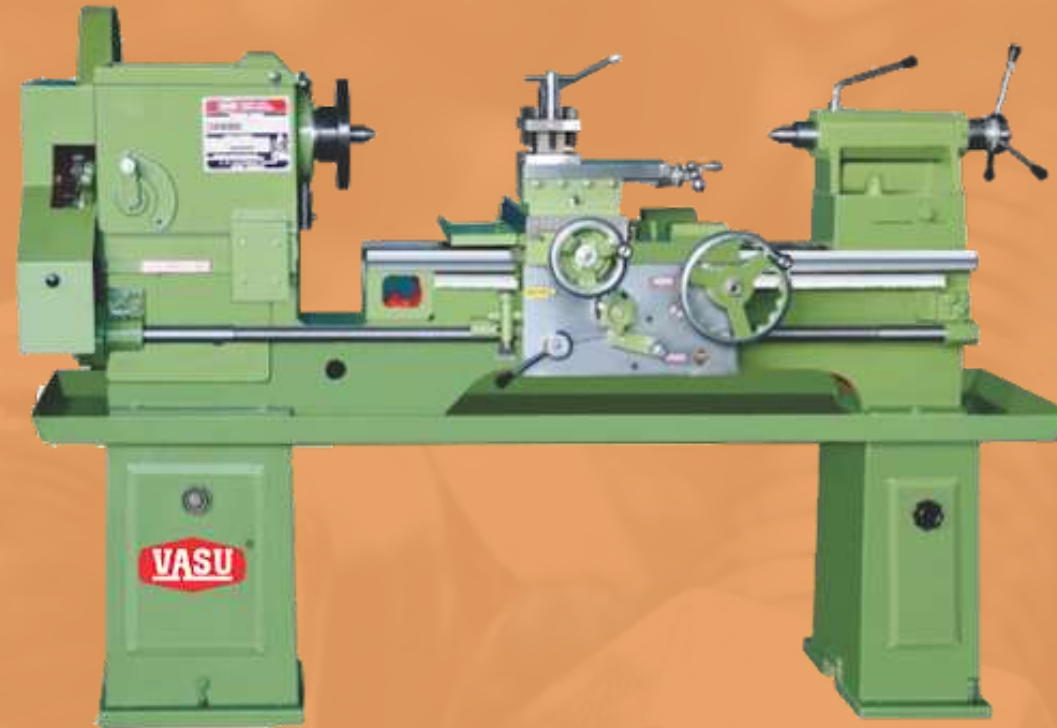
➤ Cylindrical Grinding It Is A Precise Machine To Provide Smooth Finish & Exact Size Within Tolerance Of 20 Micron To A Round Rods

## TOOL ROOM MACHINES



### POWER HACKSAW MACHINE

- It Is Used To Cut Raw Material As Per Requirement.



### LATHE MACHINE

- A lathe is a machine tool that rotates a workpiece about an axis of rotation to perform various operations such as cutting, sanding, knurling, drilling, deformation, facing, threading and turning, with tools that are applied to the workpiece to create an object with symmetry about that axis.



### HYDRAULIC PRESS MACHINE

- Hydraulic presses are commonly used for assembly and disassembly of tightly-fitting components. In manufacturing, they are used for forging, blanking, punching, and metal forming operations.

# APPEARANCE OF THE COMPANY

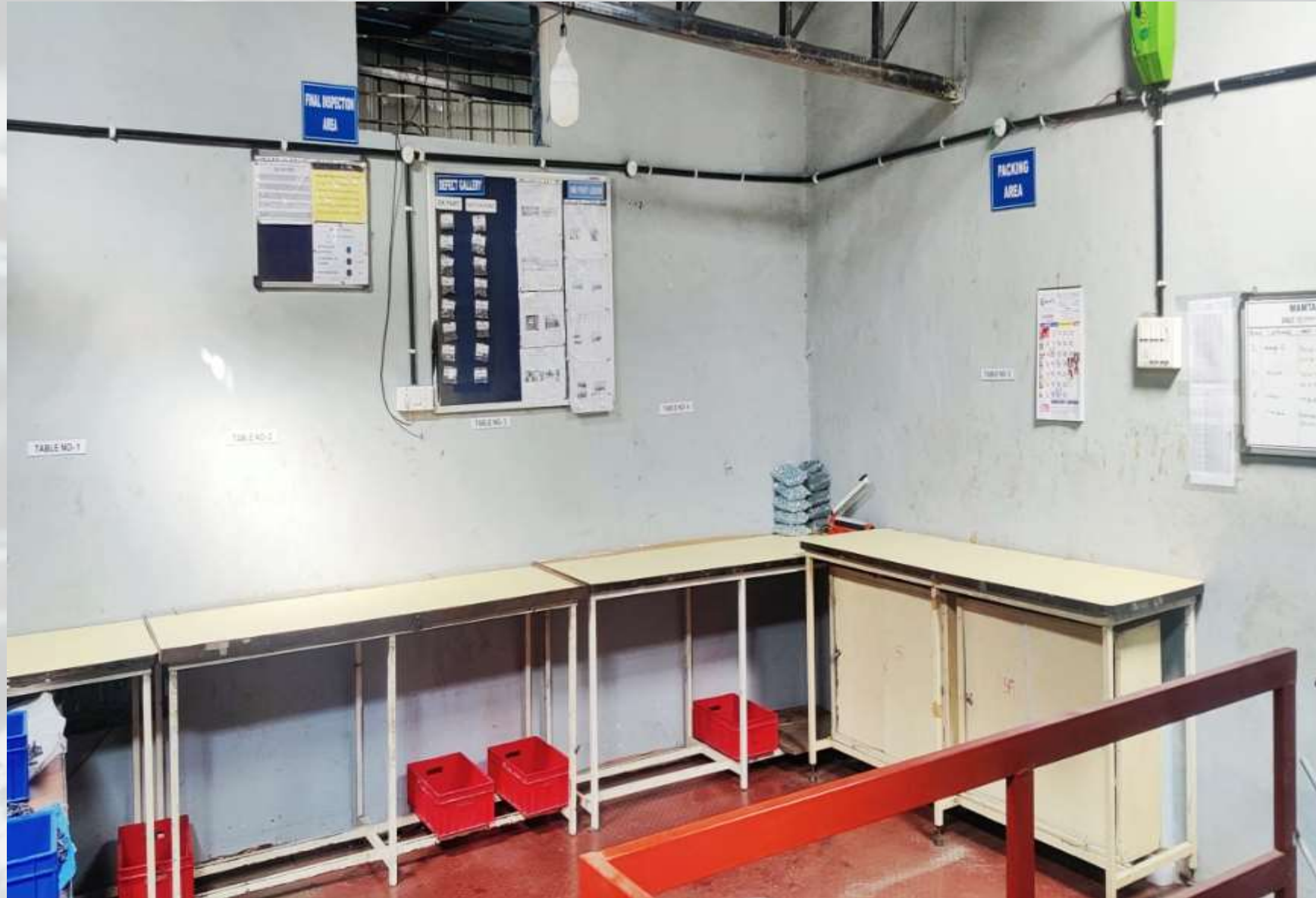


**OFFICE AREA**



**RAW MATERIAL SECTION**

# APPEARANCE OF THE COMPANY



**FINAL INSPECTION AREA**



**DISPATCH AREA**



# APPEARANCE OF THE COMPANY



**FINISH GOODS AREA**



**Q.A. LAB**

- **Quality is one of our almost focused area and hence we have all quality measurement equipment's.**
  - 1) ALL PLUG & THREADED RING GAUGES ABOVE M4 TO M16
  - 2) SURFACE PLATE
  - 3) ROCKWELL HARDNESS TESTER
  - 4) V BLOCK MAGNETIC
  - 5) DIGITAL MICROMETER
  - 6) COATING THICKNESS TESTER
  - 7) DIGITAL VERNIER CALIPER
  - 8) DIGITAL VERNIER HEIGHT GAUGE
  - 9) DIAL GAUGE
  - 10) PROFILE PROJECTOR
  - 11) TORQUE WRENCH
  - 12) BEVEL PROTECTOR
  - 13) VMM MACHINE

**VMM MACHINE**

## OUR VISION & MISSION



### VISION

**To Become A Trusted  
Name In The Engineering  
And Automobile Fasteners  
And Components.**

### MISSION

**Consistently Strive To Achieve  
Profitable Growth Through  
customer Delight, Innovation,  
Quality And Commitment  
Towards Environment And Its  
Stake Holders.**

**Scope:**

**"MANUFACTURE OF METAL FASTENERS AND MACHINED COMPONENTS"**

**Purpose:**

**Consistently strive to achieve delight for customers, Share holders, Employees and the society at large.**

**Goal:**

**To become most preferred supplier of Engineering and Automobile fasteners and components worldwide.**

## INFRASTRUCTURE LIMITATION

There are clear infrastructure limitations due to the heavy upfront investment needed as well as constant maintenance.

## TECHNOLOGICAL INTEGRATION

Technological advancements usually make the previous machines obsolete or reduce cross drastically making the previous generation of machines too expensive.

## RESISTANCE TO CHANGE

There is always resistance to change due to the large initial investment and training cost associated with the same.

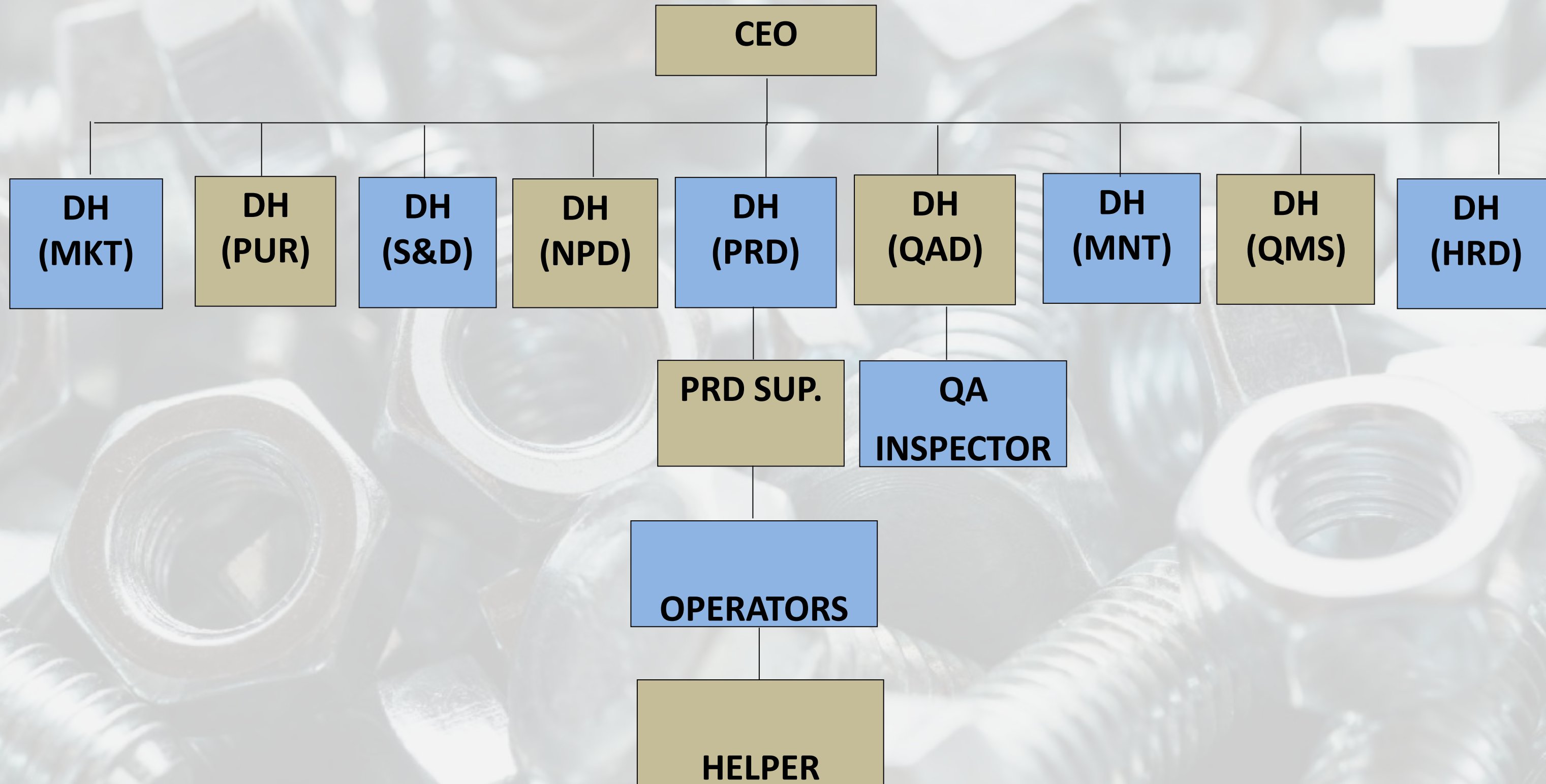
# Opportunity Statement

**In the global economy, manufacturers and businesses need high-quality, robust and reliable nuts, rivets, screws, bolts, and adjacent products and there is a steep shortage in the market for the same.**

**Lack of technology-driven smart manufacturers with expertise in a wide variety of materials and metals.**



# ORGANIZATIONAL CHART



# USPs



Unique Product  
Portfolio



Cost Effective



Complete Quality  
Control





We seek to add and share value through everything that we do. As a business we make a considerable economic impact; through employment, the payment of taxes, royalties and other contributions to local, state and national governments. We will also build local infrastructure that benefits local communities in the form of roads, schools and healthcare centres.

The company continues to increase its global footprint. Over a short period, the company has acquired and grown an exploration portfolio that follows a consistent geological discovery history.

We believe our role is to create value for India, not just through the financial value we create, but also through the non-financial value, we add to society. To deliver this responsibility, we will employ, directly and through contractors, around 100 people.

# 10,000

New jobs expected to be  
created by 2030



# Target Customer Segments



**Small & Medium  
Enterprises**



**Heavy  
Manufacturing  
Industries**



**Global Supply  
Chain Dependent  
Businesses**



# CERTIFICATE

This is to certify that

## Mamta Enterprises

W-50 /A, Near Graphite India Limited  
MIDC Satpur  
Nashik - 422 007  
Maharashtra  
INDIA  
IATF USI YY355W

has implemented and maintains a **Quality Management System**.

Scope:

Manufacture of Metal Fasteners and Machine Components.

An audit, conducted and documented in a report, has verified that this quality management system fulfills the requirements of the following International Automotive Standard:

## IATF 16949:2016

(without product design)

Certificate registration no. 50258033 IATF16  
Issuing date 2023-10-06  
This certificate is valid until 2026-10-05  
IATF No. 0484828



2-IAO-QMC-01001

For and on behalf of DQS

Nurani S. Venkatachalam  
Director-Corporate Automotive Program, DQS Holding GmbH

Michael Drechsel  
Managing Director, DQS Holding GmbH

DQS IS A MEMBER OF



IATF Contract Office: DQS Holding GmbH, Konrad-Adenauer-Allee 8-10, 61118 Bad Vilbel, Germany  
The validity of this certificate can only be verified by the QR-code.

2023-07-01



# CERTIFICATE

This is to certify that

## Mamta Enterprises

W-50 /A, Near Graphite India Limited  
MIDC Satpur  
Nashik - 422 007  
Maharashtra  
INDIA

has implemented and maintains a **Quality Management System**.

Scope:

Manufacture of Metal Fasteners and Machine Components.

Through an audit, documented in a report, it was verified that the management system fulfills the requirements of the following standard:

## ISO 9001 : 2015

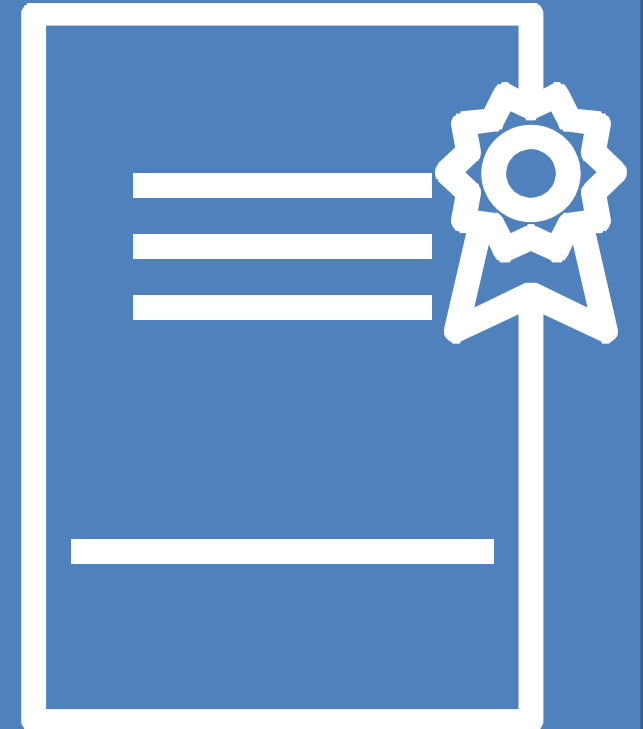
Certificate registration no. 50258033 QM15  
Date of certification 2023-10-06  
Valid until 2026-10-05



DQS Inc.

Brad McGuire  
Managing Director

Accredited Body: DQS Inc., 1500 McConnor Parkway, Suite 400, Schaumburg, IL 60173 USA  
Administrative Office: Deutsch Quality Systems (India) Pvt. Ltd., Ground Floor, South Wing, Vaishnavi Tech Park,  
Sy.No.16/1 and 17/2, Bellandur Gate, Sarjapur Main Road, Ambalipura, Bengaluru - 560102 - India  
The validity of this certificate can only be verified by the QR-code.



# Our Valuable Customer

**pmea**

  
**Mahindra**

 **CAHORS**

  
**GOLDY PRECISION**  
Stamping Pvt. Ltd

  
**MSL**

  
**POLYCAB**  
POLYCAB INDIA LIMITED

 **Pinnacle**  
INDUSTRIES

   
**SHARDA MOTOR**

  
**VIKAS INDUSTRIES**

  
**SUYOG**

**SUYOG RUBBER (INDIA) PVT. LTD.**

 **MAMTA**  
ENTERPRISES





# Get in Touch

FOR QUESTIONS AND SUGGESTIONS

## MAILING ADDRESS

W-50-A Behind Graphite India Ltd  
company M.I.D.C Satpur Nasik -  
422007

## EMAIL ADDRESS

[mamta.enterprises43@gmail.com](mailto:mamta.enterprises43@gmail.com)

## PHONE NUMBER

9881097121 / 9158283550

# Director Details

Name



**Mr. B.R. Bhadoria**  
**CEO**



**Thank you**

**Presented by Mamta Group of compy**